

for the Dale Warland Singers
BY AND BY
for S.A.T.B. Chorus, a cappella

Spiritual
Setting by
Carol Barnett

♩ = c. 120 *lightly*

T solo *p* *tutti p*

Oh by— an' by,— by— an' by,— I'm gon-na lay down this

Piano (for rehearsal only)

heav-y load.. Oh— by— an' by,— by— an' by,— I'm gon-na lay down this

B *p*

Oh by— an' by an' by— an' by,— I'm gon-na lay down this

10

S *p* *mp*

A *p* *mp*

T *mp*

B *mp*

Oh by— an' by,— by— an' by,— I'm gon-na lay down this

Oh by an' by,— by an' by,— I'm gon-na lay down this

heav - y load.. Oh by— an' by,— by— an' by,— I'm gon-na lay down this

heav - y load. Oh by— an' by an' by an' by, I'm gon-na lay down this

10

SI
 heav - y load.. Oh by- an' by- an' by,- by- an' by,- I'm gon- na lay down this

SII
 heav - y load.- Oh by- an' by,- by- an' by,- I'm gon- na lay down this

A
 heav - y load.- Oh- by an' by,- by an' by,- I'm gon- na lay down this

TI
 heav - y load.- Oh- by- an' by,- by an' by- an' by,- I'm gon- na lay down this

TII
 heav - y load.- Oh- by- an' by,- by an' by,- I'm gon- na lay down this

B
 heav - y load.- Oh by an' by,- by an' by,- I'm gon- na lay down this

unis. 18 *mp*
 heav - y load.- I'm gon- na lay down this

mp
 heav - y load.- I'm gon- na lay down this

unis. *solo mf* *tutti mp*
 heav - y load.- I know my robe's gon- na fit me well,- I'm gon- na lay down this

mp
 heav - y load.- I'm gon- na lay down this

18 *mf* *mp*

heav - y load... I'm gon-na lay down this

heav - y load... I'm gon-na lay down this

heav - y load, 'cause I tried it on... at the gates of hell, I'm gon-na lay down this

heav - y load... I'm gon-na lay down this

Musical notation includes treble and bass clefs, a key signature of two flats, and dynamic markings such as *mp* and *mf*. A triplet of eighth notes is indicated in the vocal line.

heav - y load... Oh by an' by, by an' by,

heav - y load... Oh by an' by, by an' by an' by,

heav - y load... Oh by, by, by an' by, by an' by,

heav - y load... Oh by an' by, by, by an' by,

heav - y load... Oh by an' by, by an' by,

heav - y load... Oh by, by, by an' by, by an' by,

Musical notation includes treble and bass clefs, a key signature of two flats, and dynamic markings such as *p*. Section markers SI, SII, A, II, and III are present. A box containing the number 26 is located above the first vocal line.

mf
 I'm gon - na lay down this heav - y load. — Oh by — an' by — an' by, —
mf
 I'm gon - na lay down this heav - y load. — Oh by — an' by, —
mf
 I'm gon - na lay down this heav - y load. — Oh by an' by, —
mf
 I'm gon - na lay down this heav - y load. — Oh by — an' by, —
mf
 I'm gon - na lay down this heav - y load. — Oh by — an' by, —
 down — this heav - y load. — Oh by an' by, —

by — an' by, — I'm gon - na lay down this
 by — an' by, — I'm gon - na lay down this
 by an' by, — I'm gon - na lay down this
 by an' by — an' by, — I'm gon - na lay down this
 by an' by, — I'm gon - na lay down this
 by an' by, — I'm gon - na lay down this

unis. 34 *mf*

heav - y load... I'm gon-na lay down this

mf

heav - y load... I'm gon-na lay down this

unis. *mf*

heav - y load... I'm gon-na lay down this

solo f *mf tutti*

heav - y load... Oh hell — is a deep and dark dis-pair, — I'm gon-na lay down this

34 *f* *mf*

mf

heav - y load.. I'm — gon-na lay down this

mf

heav - y load.. I'm — gon-na lay down this

mf

heav - y load.. I'm — gon-na lay down this

f *mf*

heav - y load, — so stop, poor- sin-ner, an' a - don't go there, — lay down this

f *mf*

42

SI *f*
 heav - y load.. Oh by_ an' by, _ by_ an' by, _ I'm gon-na lay down this

SII *f*
 heav - y load.. Oh by_ an' by, _ by an' by_ an' by, _ I'm gon-na lay down this

A *f*
 heav - y load.. Oh by, by, by an' by, by_ an' by, _ I'm gon-na lay down this

TI *f*
 heav - y load.. Oh by_ an' by, _ by, by_ an' by, _ I'm gon-na lay down this

TII *f*
 heav - y load.. Oh by_ an' by, _ by_ an' by, _ I'm gon-na lay down this

B *f*
 heav - y load.. Oh by, by, by_ an' by, by_ an' by, _ down_ _ _ _ _ this

42

sub. p

heav - y load.. Oh by_ an' by, _ by_ an' by, _ I'm_ gon - na lay down this

sub. p

heav - y load.. Oh by an' by, _ by an' by, _ I'm_ gon - na lay down this

sub. p

heav - y load.. Oh by_ an' by, _ by an' by, _ oh, _ I'm_ gon - na lay down this

sub. p

heav - y load.. Oh by an' by, _ by an' by, _ oh, _ I'm_ gon - na lay down this

sub. p

50

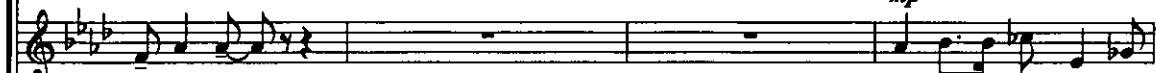
solo *mf*

tutti
mp



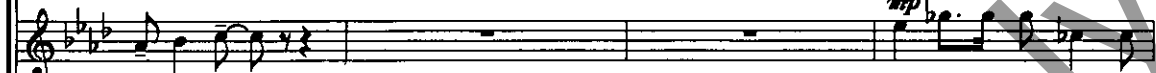
heav-y load.— Oh one of these morn-ings, bright— an' fair,— I'm gon-na lay down this

mp



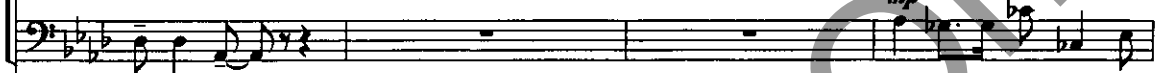
heav-y load.— I'm gon-na lay down this

mp



heav-y load.— I'm gon-na lay down this

mp

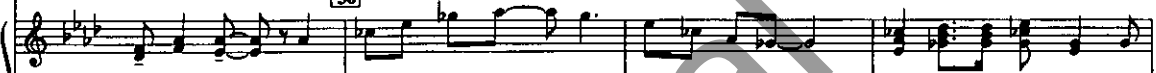


heav-y load.— I'm gon-na lay down this

50

mf

mp



heav-y load,— gon-na take my wings— and cleave— the air,— I'm— gon-na lay down this

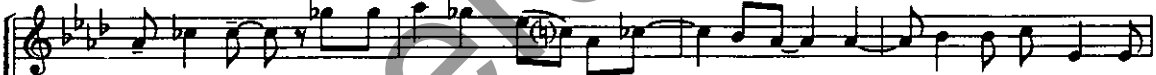
mp



heav-y load.— I'm— gon-na lay down this

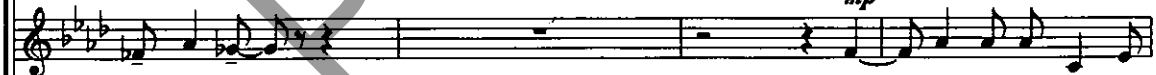
mf

mp



heav-y load,— gon-na take my wings— and cleave— the air,— I'm— gon-na lay down this

mp



heav-y load.— I'm— gon-na lay down this

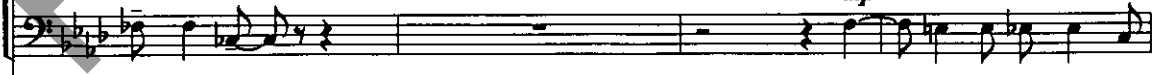
mf

mp



heav-y load,— gon-na take my wings— and cleave— the air,— I'm— gon-na lay down this

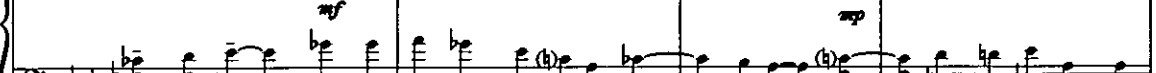
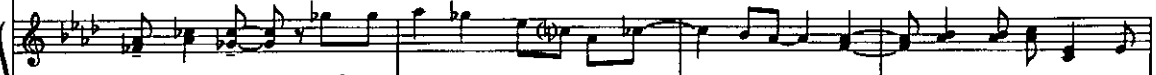
mp



heav-y load.— I'm— gon-na lay down this

mf

mp



58

S
heav-y load.- Oh by- an' by, by- an' by, I'm gon-na lay down this

A
beav-y load.- Oh by, by, by an' by, by, by, I'm gon-na lay down this

TI
heav-y load.- Oh by- an' by, by an' by, by, by, I'm gon-na lay down this

TII
heav-y load.- Oh by- an' by, by an' by- an' by, I'm gon-na lay down this

B
heav-y load.- Oh by, by, by- an' by, by, by, down this

58

sub. mp
heav-y load.- Oh by- an' by, I'm gon-na lay down this

sub. mp
heav-y load.- Oh by- an' by, I'm gon-na lay down this

unis. *sub. mp*
heav-y load.- Oh by- an' by, I'm gon-na lay down this

sub. mp
heav-y load.- Oh by- an' by, gon-na lay down this

66 *mf*

heav-y load.— Sing and

mf

heav-y load.— Oh when I get to heav-en gon-na sing and shout,—

mf

heav-y load.— Oh when I get to heav-en gon-na sing and shout,—

heav-y load.—

66 *mf*

Detailed description: This system contains the first two vocal staves and the piano accompaniment. The vocal staves are in treble clef with a key signature of three flats (B-flat major/D-flat minor) and a 4/4 time signature. The piano accompaniment is in bass clef. The first vocal staff has a measure rest followed by 'Sing and'. The second vocal staff has 'heav-y load.— Oh when I get to heav-en gon-na sing and shout,—'. The piano accompaniment provides harmonic support with chords and moving lines.

mp *mf* *f*

shout,— this heav-y load,— for there's

mp *mf* *f*

— sing and shout,— this heav-y load,— for there's

mp *mf* *f*

this heav-y load,— for there's

mf

Sing and shout, I'm gon-na lay down this heav-y load.—

f

Detailed description: This system contains the second two vocal staves and the piano accompaniment. The vocal staves continue the melody with lyrics: 'shout,— this heav-y load,— for there's', '— sing and shout,— this heav-y load,— for there's', and 'this heav-y load,— for there's'. The piano accompaniment continues with harmonic support, including a dynamic marking of *f* in the final measure.

no — one there to turn me out, I'm —

no — one there to turn me out, I'm —

no — one there to turn me out, I'm —

I'm —

sub. pp
— gon - na lay down this heav - y load. — Oh

sub. pp
— gon - na lay down this heav - y load. — Oh —

sub. pp
— gon - na lay down this heav - y load. — Oh —

sub. pp
— gon - na lay down this heav - y load. — Oh

sub. pp

75

by — an' by, — by — an' by, — I'm gon - na lay down this

by an' by, — by an' by, — I'm gon - na lay down this

by — an' by, — by — an' by, — I'm gon - na lay down this

by — an' by an' by an' by, — I'm gon - na lay down this

75

S

heav - y load. — Oh by — an' by, — by — an' by, —

A

heav - y load. — Oh by, by an' by, by, —

TI

heav - y load. — Oh by — an' by — an' by, by, —

TII

heav - y load. — Oh by — an' by — an' by — an' by, —

B

heav - y load. — Oh by, by — an' by, by, —

SI
I'm gon - na lay down this heav - y load. — Oh

SII
I'm gon - na lay down this heav - y load. — Oh

A
I'm gon - na lay down this heav - y load. — Oh

TI
I'm gon - na lay down this heav - y load. — Oh

TII
I'm gon - na lay down this heav - y load. — Oh

B
down this heav - y load. — Oh

83 *ff*
by — an' by, — by — an' by, — I'm gon - na lay down this

ff
by — an' by, — by an' by — an' by, — I'm gon - na lay down this

ff
by, — by, — by an' by, — by — an' by, — I'm gon - na lay down this

ff
by — an' by, — by, — by — an' by, — I'm gon - na lay down this

ff
by — an' by, — by — an' by — an' by, — I'm gon - na lay down this

ff
by, — by, — by — an' by, — by — an' by, — I'm gon - na lay down this

83

unis.

heav - y load. — Oh by — an' by, — by — an' by, — I'm

heav - y load. — Oh by an' by, — by — an' by, —

unis.

heav - y load. — Oh by — an' by, — by an' by, —

heav - y load. — Oh by — an' by, — by an' by, —

p

ritard. al fine

— gon - na lay down — this heav - y load. —

lay down — this heav - y load. —

I'm — gon - na lay down — this heav - y load. —

p

this heav - y load. —

ritard. al fine